

# Huron Lodge Windsor, Ontario

**patruus 400**  
Natural Gas

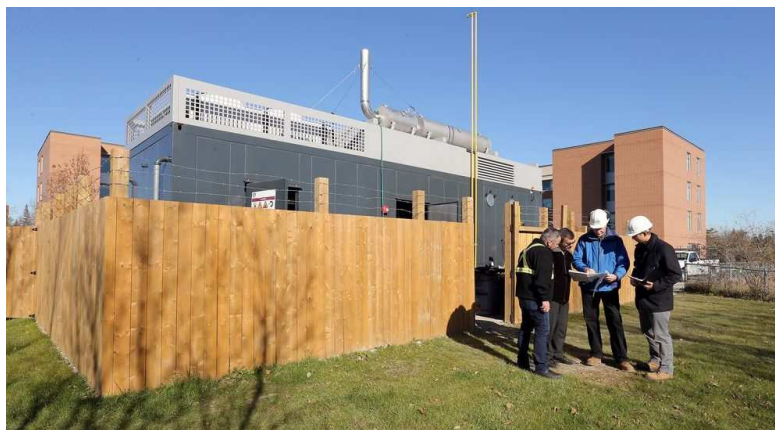
## Fast Facts:

**Location:** Windsor, ON, Canada

**Generating Capacity:** 400 kW

**Heat Recovery:** Thermal energy captured to heat building and water

**Gas Type:** Natural Gas



## About the Site:

Huron Lodge is a state-of-the-art long-term care facility that opened in 2007. A 177,000 square foot building with living areas, common areas, and numerous building amenities. At Huron Lodge, large volumes of water have to be heated for bathing and cooking and the thermostat is set pretty high to keep residents comfortable.



## Application

Using natural gas, the CHP produces electricity and the thermal energy is captured to heat the building and water.

Through the use of CHP, The Huron Lodge system will save over \$200,000 annually on heating and electricity costs.

**2G Energy Inc.**  
**205 Commercial Dr.**  
**St. Augustine, FL 32092**  
**904-579-3217**



[sales.us@2-g.com](mailto:sales.us@2-g.com)



[www.2g-energy.com](http://www.2g-energy.com)